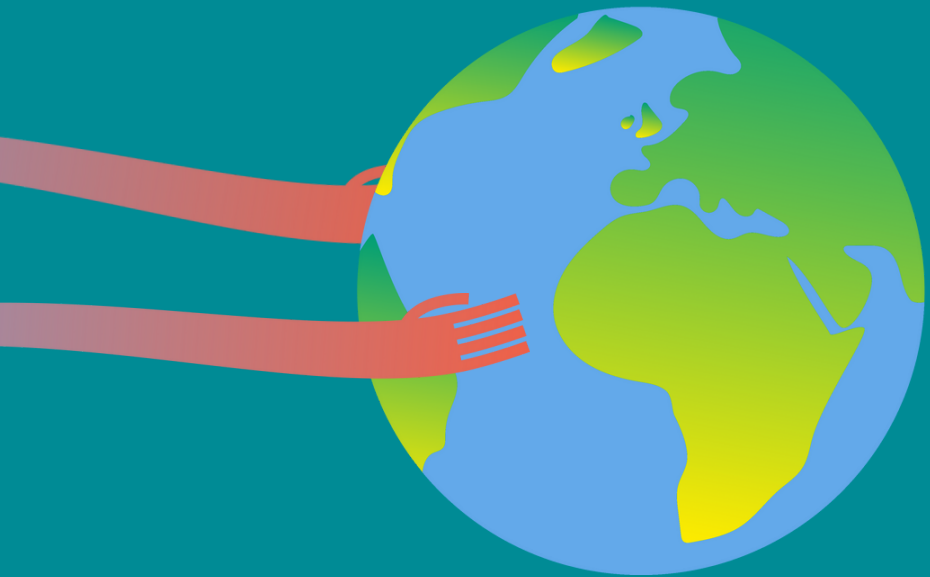


Rödl & Partner

Sustainability



A new organisational approach to business

The sustainable approach to business has become a key factor for the development of small, medium and large enterprises.

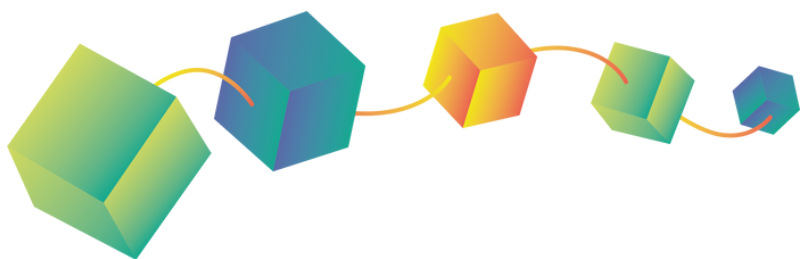
Integrating sustainability into your company involves implementing a new organisational approach that allows you to manage sudden technological changes, coping with an ever-increasing and tough competition, coming to terms with scarcity of resources and mitigating business and compliance risks.

Our Services

Sustainability orientation implies that companies do not limit themselves to the pursuit of profits and compliance with legal obligations, but strive to operate in an ethically responsible manner and to develop a social awareness of issues of collective interest, voluntarily integrating social, environmental and ethical issues into their business activities and core strategy, in tight cooperation with their stakeholders, and periodically reporting on the results of their activities through a sustainability report or balance sheet, not only focusing on financial and accounting aspects, but also on the social and environmental dimensions.

Our team, made up of attorneys, accountants, auditors and experienced consultants in the field, stands by Italian and foreign companies and groups in the development of sustainability issues.

In partnership with our partner Consulnet Italia S.r.l., a leading company in sustainable organisational development, we have set up the first sustainability management system, called EASI (Ecosistema Aziendale Sostenibile Integrato), and recognised by Accredia as suitable for third-party certification. Working with integrated teams, we are able to assist companies in implementing EASI and assisting them with certification.



Our services

Specifically, the services offered include:

- ESG Assessment and Due Diligence;
- Drafting of sustainability reports according to GRI and ESRS standards;
- Assurance services of sustainability reports through our auditing company Rödl & Partner Audit S.r.l.;
- Assistance in implementing sustainable corporate governance with application of the EASI standard and accompaniment towards related certification;
- Assistance and accompaniment to certification for Gender Equality pursuant to PdR 125;
- Drafting of sustainability policies (e.g. Climate Change Risk Management, D&I, health and safety, working conditions, equal remuneration, etc.) and assistance in corporate collective bargaining on ESG issues;
- Drafting of variable remuneration plans tied to the achievement of ESG objectives;
- Materiality matrix, sustainability impact assessment, sustainable development plans and identification of KPIs for reporting purposes;
- Internal and external audits (e.g. on the supply chain);
- Stakeholder engagement;
- Sustainability legal & tax compliance health-check;
- Assistance in participation in invitations to tender and in obtaining ESG loans or other ESG financial means (private and public);
- Regulatory oversight of green claims;
- Sustainability training courses.

Contacts



RITA SANTANIELLO
Attorney at law
Partner
T +39 02 6328 841
rita.santaniello@roedl.com



About us

As attorneys, tax advisers, management and IT consultants and auditors, we are present with 110 own offices in around 50 countries. Worldwide, our clients trust our 5,800 colleagues.

In our offices in Milan, Rome, Padua and Bolzano alone, Rödl & Partner employs more than 230 employees who provide active and competent support to national and international clients. Our consulting activities cover all areas of legal, economic, international tax and labour consulting, as well as the auditing services provided by Rödl & Partner Audit.



Milan

Largo Donegani, 2
20121 Milan
T + 39 02 6328 841
F + 39 02 6328 8420
milano@roedl.com

Padua

Via Francesco Rismondo, 2/E
35131 Padua
T + 39 049 8046 911
F + 39 049 8046 920
padova@roedl.com

Rome

Piazza di S. Anastasia, 7
00186 Rome
T + 39 06 9670 1270
F + 39 06 3223 394
roma@roedl.com

Bolzano

Piazza Walther-von-der-Vogelweide, 8
39100 Bolzano
T + 39 0471 1943 200
F + 39 0471 1943 220
bolzano@roedl.com