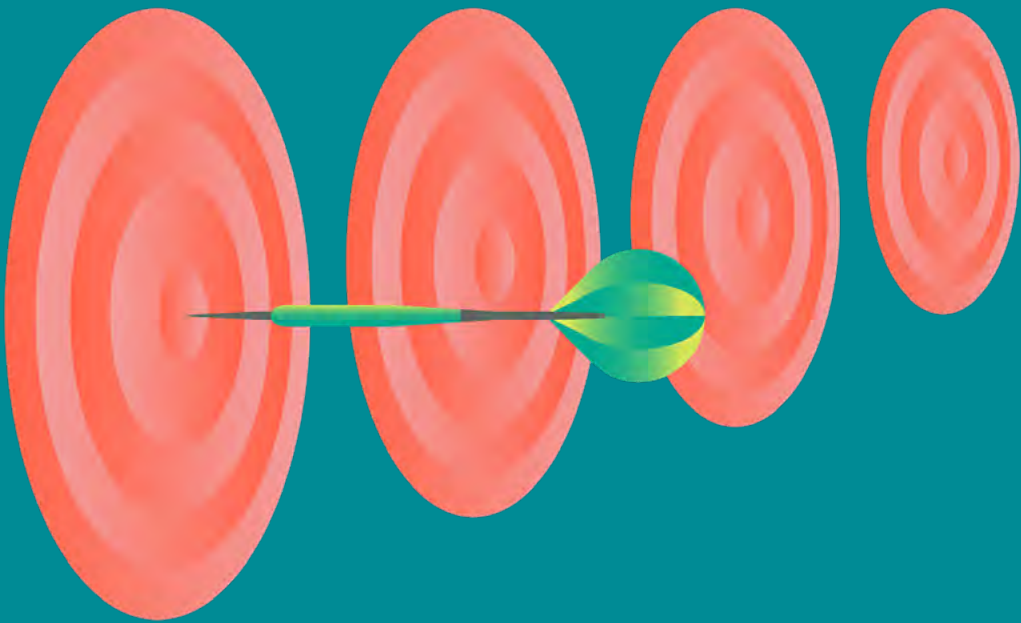


Rödl & Partner

---

VAT: IN-HOUSE  
TRAINING AND  
WORKSHOPS FOR  
YOUR COMPANY

---



As experts in the field, we are always at our clients' side, taking care of the legal and tax aspects of their business activities, always with a view to their success.

# Themen (Auswahl)

---

- Preparation and issue of invoices: formal requirements of invoicing and VAT specificities (credit note, payment on account, etc.)
- Cross-border movement of goods (export, import, transfer and intra-Community acquisition)
- Chain transactions and triangulations
- Goods on consignment (so-called “Call off-stock”), custom warehouse
- Cross-border trade in services: services provided abroad and receipt of services from abroad - reverse charge mechanism
- Tax deduction: prerequisites, risks, optimisation and allocation of tax
- Value added tax in the real estate sector
- Value added tax in tax audits and tax assessments
- Leasing: financial leasing and operating leasing and practical VAT issues
- VAT on company cars and mobile phones assigned to employees
- Reporting obligations: annual declaration, periodic settlements, Intrastat form
- VAT refund procedures
- Value added tax in accounting and logistics: process organisation, risk management and tax compliance

The image shows the letters 'VAT' in a large, stylized, red font. The letters are thick and rounded, with a slight gradient from a darker red at the top to a lighter red at the bottom. The 'V' is on the left, the 'A' is in the middle, and the 'T' is on the right. The 'A' has a white circular cutout in the center. The 'T' has a wide, flat top bar. The overall style is modern and clean.

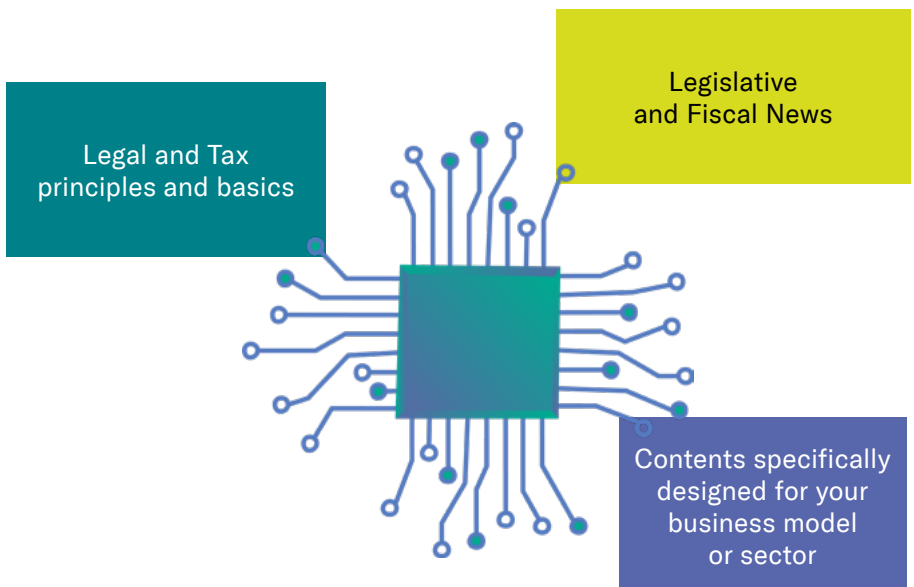
# Inhalte, Ziele und Kosten

---

- As a rule, there is a 3-hour workshop in the form of a basic training course for your staff at your premises with a handout on the chosen topic
- In addition to substantive legal explanations, topics include practical cases
- We are pleased to offer our consultancy fee at a fixed price (plus VAT, travel expenses and reimbursements)

Upon request, we are also happy to offer customised workshops designed for your company's main operations or other specific issues concerning your industry or your business model. The scope of work and the fee can be agreed in advance.

The workshop documents can also be customised according to your needs and can form a VAT guide or handbook adapted to the types of your operations.



# Target

---

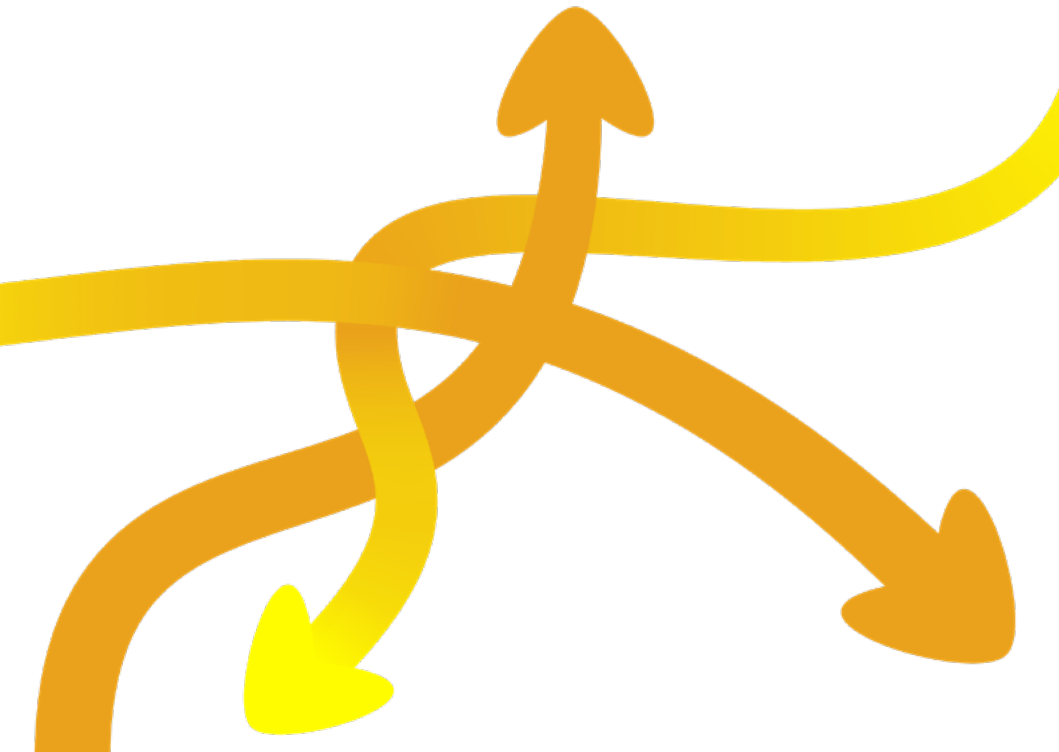
Employees in charge of VAT issues or those who need an assessment of the effects of VAT in various types of business transactions (e.g. purchases, sales, exports) should be sensitised and trained in the proper mapping of VAT in the ERP system, as well as in the management of invoicing, periodic compliance and tax returns.

Any legislative developments and updates are always taken into account. In addition to the basic principles presented, practical examples are also referred to and concrete cases of VAT audits are addressed.

# Reference target

---

Employees in tax, accounting, logistics, sales, export or purchasing departments and VAT specialists.



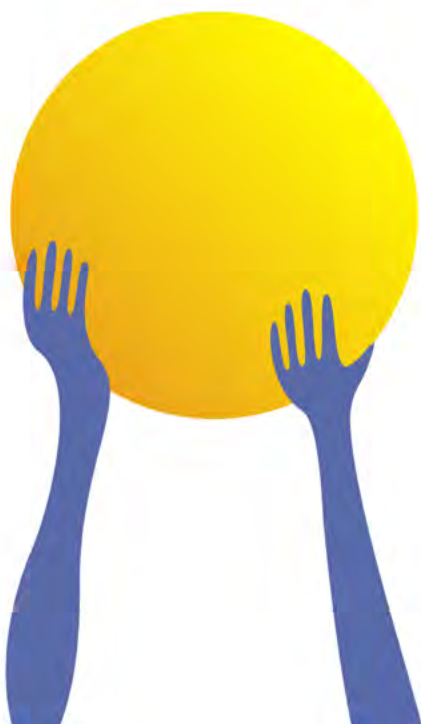
# Contacts

---



SKEVI LICOLLARI PHD, LL.M.  
Chartered Accountant  
Statutory Auditor  
Associate Partner  
VAT Consulting | VAT Services

T +39 (02) 63 28 841  
[skevi.licollari@roedl.com](mailto:skevi.licollari@roedl.com)



# Rödl & Partner

As attorneys, tax advisers, management and IT consultants and auditors, we are present with 106 own offices in 48 countries. Worldwide, our clients trust our 5130 colleagues.

In Italy, Rödl & Partner is present in Milan, Rome, Padua and Bolzano, with more than 200 professionals who provide assistance to both national and international clients. The consulting activity covers all areas of business law, international taxation and BPO services. Moreover we offer audit services, provided by Rödl & Partner Audit S.r.l.



## **Milan**

Largo Donegani, 2  
20121 Milan  
T + 39 (02) 63 28 841  
F + 39 (02) 63 28 84 20  
info@roedl.com

## **Padua**

Via Francesco Rismondo, 2/E  
35131 Padua  
T + 39 (049) 80 46 911  
F + 39 (049) 80 46 920  
padova@roedl.com

## **Rome**

Piazza di S. Anastasia, 7  
00186 Rome  
T + 39 (06) 96 70 12 70  
F + 39 (06) 32 23 394  
roma@roedl.com

## **Bolzano**

Piazza Walther-von-der-Vogelweide, 8  
39100 Bolzano  
T + 39 (04 71) 19 43 200  
F + 39 (04 71) 19 43 220  
bolzano@roedl.com